

**FEBRUARY 2024**

# EXPANSION AND DISCOVERY OF DISTRICT SCALE GOLD & COPPER ASSETS IN BRITISH COLUMBIA



## GOLD-SILVER-COPPER PROJECTS IN BRITISH COLUMBIA

- Buck Project: Epithermal Au-Ag, Porphyry Cu-Mo
- JD Project: Epithermal Au-Ag, Porphyry Cu-Au



## MINING FRIENDLY REGION

- Existing infrastructure & access
- Transparent permitting process, low-risk jurisdiction

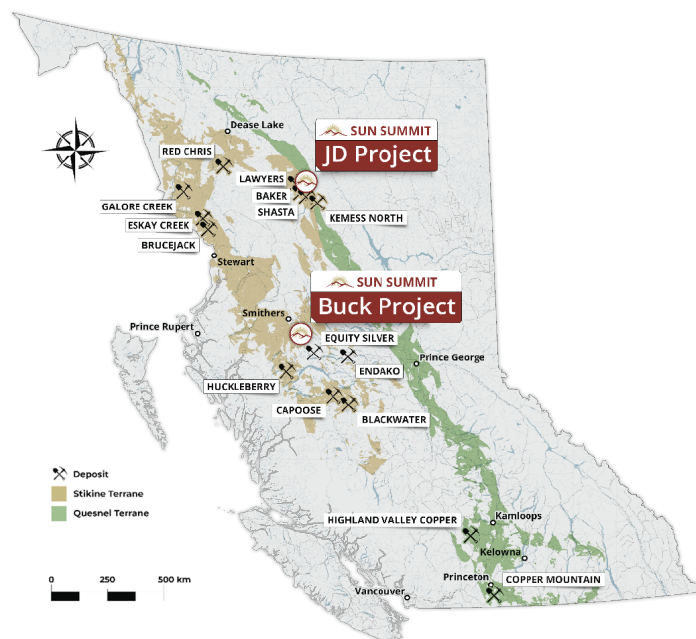


## EXPERIENCED MANAGEMENT & TECHNICAL TEAM

- BC mining experience with jurisdictional advantage



## ACCESS TO CAPITAL FOR ONGOING EXPLORATION



## NEAR-TERM CATALYSTS

### JD Project

- Compilation of historic property-wide exploration data
- Initiation of summer 2024 exploration program

### Buck Project

- Initial Mineral Resources Estimate at Buck Main
- Drill target generation at additional exploration targets

## SHARE STRUCTURE

Outstanding Shares	35,200,561
Warrants	10,760,034
Options	1,931.667
Fully Diluted	47,892.262
Insider Ownership	23%
52 week high/low	\$0.56/\$0.08
Market Capitalization	~\$5 Million CAD
Working Capital	~\$1.0 Million CAD

As of February 8th, 2024

## MANAGEMENT & DIRECTORS

**Brian Lock**, *Executive Chairman*  
**Sharyn Alexander, M.Sc.**, *President*  
**Robert D. Willis, B.Sc., P.Eng.** *Senior Advisor*  
**Ken MacDonald, P.Geo.** *VP Exploration*  
**Christopher Leslie, Ph.D., P.Geo.** *Technical Advisor*  
**Andrew Carstensen, P.Geo.** *Director*  
**Craig B. Prenter, CGA, CPA**, *Director*  
**Purni Parikh**, *Director*  
**Waseem Javed, CPA, CA**, *CFO*

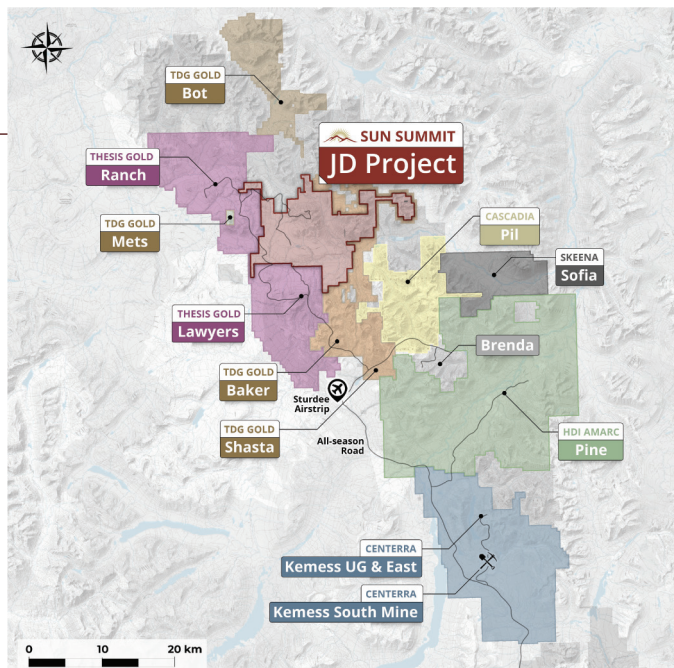
## JD PROJECT HIGHLIGHTS

### Prolific Region in British Columbia

- Metal endowed Toodoggone gold-copper mining district
- World class Stikine Terrane, similar to Golden Triangle
- Renewal of historic mining camp: Kemess Mine (Centerra)
- Emerging district: Lawyers, Ranch (Thesis), Shasta, Baker, Mets (TDG), Joy (Amarc), Pil (Cascadia)
- Mining friendly, active jurisdiction, developing infrastructure
- Large land package, ~15,000 ha mineral tenure

### Epithermal Au-Ag and Porphyry Cu-Au

- Two deposit types: Epithermal gold-silver mineralization, Porphyry-related copper-gold mineralization
- Significant historic drilling, holes selectively sampled
- Strong multi-element soil anomalies across several targets
- Under explored, significant size and scale potential



#### HIGH-GRADE EPITHERMAL AU-AG:

- 35.7 m @ 7.3 g/t Au incl. 1.0 m @ 215.4 g/t Au (JD95-047)
- 77 m @ 2.4 g/t Au incl. 12.6 m @ 10.8 g/t Au (JD12-003)
- 22 m @ 11.7 g/t Au incl. 4.0 m @ 61.2 g/t Au (CZ97-008)

## BUCK PROJECT HIGHLIGHTS

### District Scale Potential

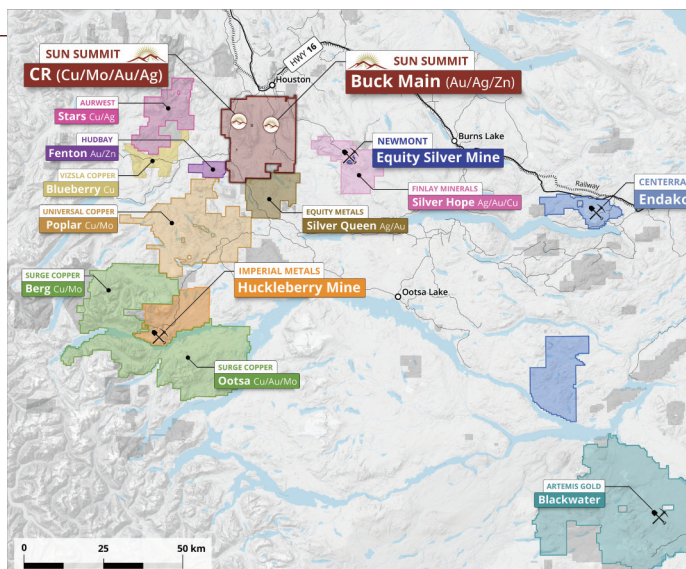
- Mining friendly jurisdiction, proximal to known deposits, former and developing mines: Equity Silver (Newmont), Huckleberry (Imperial), Blackwater (Artemis)
- Existing infrastructure, year-round drilling access
- Low cost of exploration
- Large tenure package, ~52,000 hectares near Houston, B.C.

### Buck Main Au-Ag-Zn

- Near surface bulk tonnage-style mineralization
- Significant high-grade gold zones
- Open in all directions and at depth, upside potential
- Initial Mineral Resource Estimate planned for Q1 2024

### CR Cu-Mo-Au-Ag (acquired from Teck Resources)

- Target areas show strong porphyry-related mineralization
- Strong discovery potential, open for expansion



#### BULK TONNAGE MINERALIZATION AND HIGH-GRADE DISCOVERY

- 1.07 g/t Au, 5.5 g/t Ag, 0.65% Zn over 109 m (BK21-017)
- 0.71 g/t Au, 5.6 g/t Ag, 0.62% Zn over 187 m (BK21-033)
- 49.6 g/t Au, 10.8 g/t Ag, 0.06% Zn over 1.5 m (BK20-012)
- 246 g/t Au, 66.7 g/t Ag, 0.02% Zn over 0.5 m (BK21-020)

*Drill intervals highlighted are downhole core lengths. True widths are unknown.*

DISCLAIMER: This brochure contains forward-looking statements, including but not limited to comments regarding predictions and projections. Forward-looking statements address future events and conditions and therefore involve inherent risks and uncertainties. Actual results may differ materially from those currently anticipated in such statements. Accordingly, readers should not place undue reliance on the forward-looking statements. All forward-looking statements contained in this presentation are expressly qualified by this cautionary statement. This brochure has been approved by Sun Summit's Vice President Exploration, Ken MacDonald, P.Geo. and Technical Advisor, Christopher Leslie, P.Geo. a "Qualified Person" as defined in National Instrument 43-101 Standards of Disclosure for Mineral Projects of the Canadian Securities Administrators. They have not been able to verify the historical exploration data disclosed, including sampling, analytical and test data underlying the technical information in this brochure since such data is historical and the original drill core and samples are not readily available.