



Green Earth Metals

Corporate Presentation

September, 2023

Team

Rory Quinn, CEO

18 years of mining capital-markets experience, formerly CEO of E79 Resources and prior to that, Director, Investor Relations at Wheaton Precious Metals (Silver Wheaton). Launched E79, raised \$6 million at \$0.45 (\$0.05 seed round), advanced to discovery hole of 11m of 160gpt Au, raised \$8 million at \$1.00 with Eric Sprott as lead order. Shares traded up to \$1.60 on high volume. During tenure at Wheaton, worked on acquisitions totaling over US\$6 billion, the largest of which was US\$2 billion, relative to Vale's world-class copper-gold mine, Salobo

Richard Osmond, P. Geo, ICD.D

25 years of experience in the mining sector including experience with INCO (VBNC), Falconbridge and Anglo American. Involved in exploration discoveries at Vale's Voisey's Bay deposit and Glencore's Raglan mine. Later hired as a senior technical leader with Anglo American responsible for North America and Europe focused on Ni exploration in northern Canada, Alaska and Scandinavia as well as IOCG and porphyry Cu-Mo exploration in Mexico and Alaska. President for Globetrotters Resource Group Inc. ICD Director Education from Rotman

Robert Willis, P.Eng

35 years of experience in the mineral resources industry. In 2001, founded Geologix Exploration and served as President, Director and Chairman until initiating San Marco Resources with business partner R. Stuart "Tookie" Angus in 2005. Acted as CEO and Director of Sun Summit Minerals and oversaw the transition from exploration in Mexico to Canada in 2019. Senior Advisor with the company

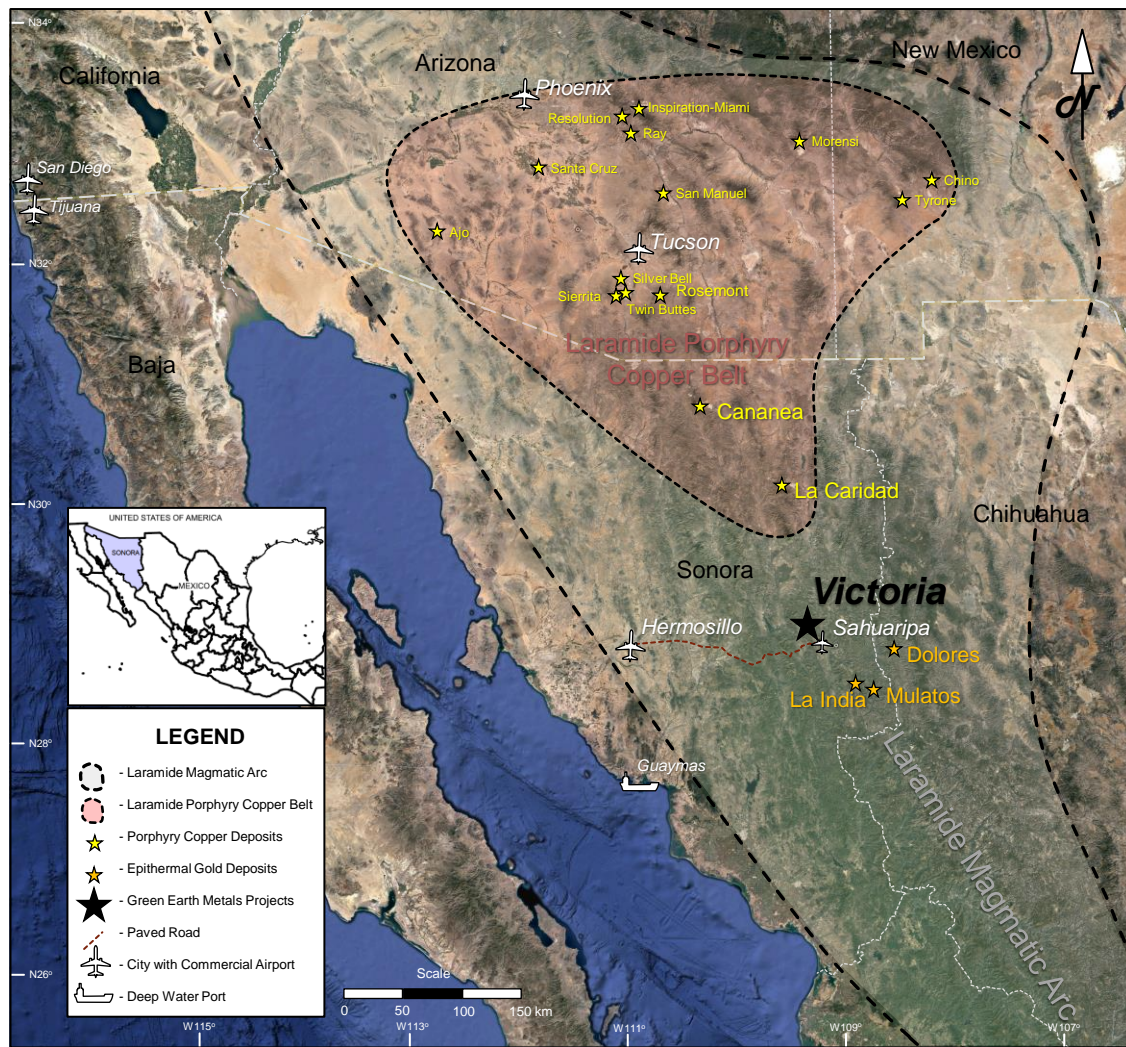
Christian T. Grijalva, B.Sc. – San Marco Mexico S.A.

10 years of exploration experience in base & precious metals. Previously worked for Inmet Mining & First Quantum focused on target generation and property evaluations in porphyry copper-epithermal systems. Worked as the COO for San Marco Mexico S.A, the Mexican subsidiary of Sun Summit Minerals

Manuel Montoya

36 years of experience in the mining and oil and gas industry. Over the last 17 years, has been Chief Geologist for Cominco Peru, Chief Geologist of the Andes Exploration Group in South America for Teck Cominco and recently as VP Exploration for Globetrotters Resource Group Inc.

Location



Jurisdiction

- Sonora, Mexico.
- Total of 6800 ha controlled
- Highly trained work force
- Year round exploration
- **In country legal, admin & technical team**

Flagship Project

- Victoria – **Untested porphyry Cu-Mo±Au system**
- Victoria mineralization age dated as Laramide
- Located along southern extension of **Laramide Porphyry Copper Belt** hosting:
 - **Cananea (top 10 copper mine worldwide)**
 - La Caridad porphyry Cu+Mo± Au deposit
- Road/Airstrip accessible from Hermosillo

Location

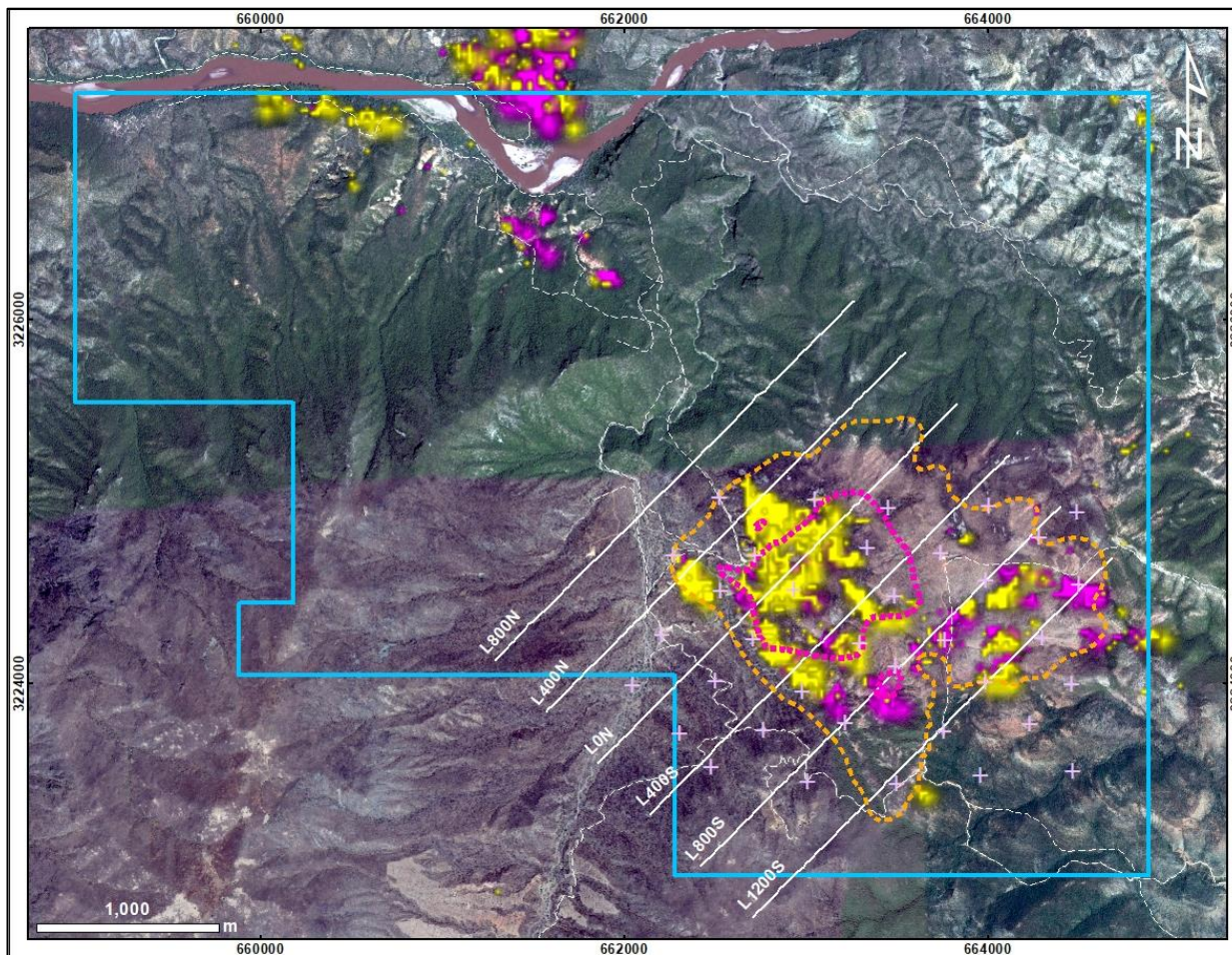


Victoria

- 30 mins to site from town of Sahuaripa
 - Available hotels, restaurants, grocery, supplies, equipment and staff
 - Core logging warehouse
 - Airport
- 3 hour drive from Hermosillo
 - Everything available, heavy equipment, assay services, etc.



Victoria – Porphyry Cu-Mo-Au Target



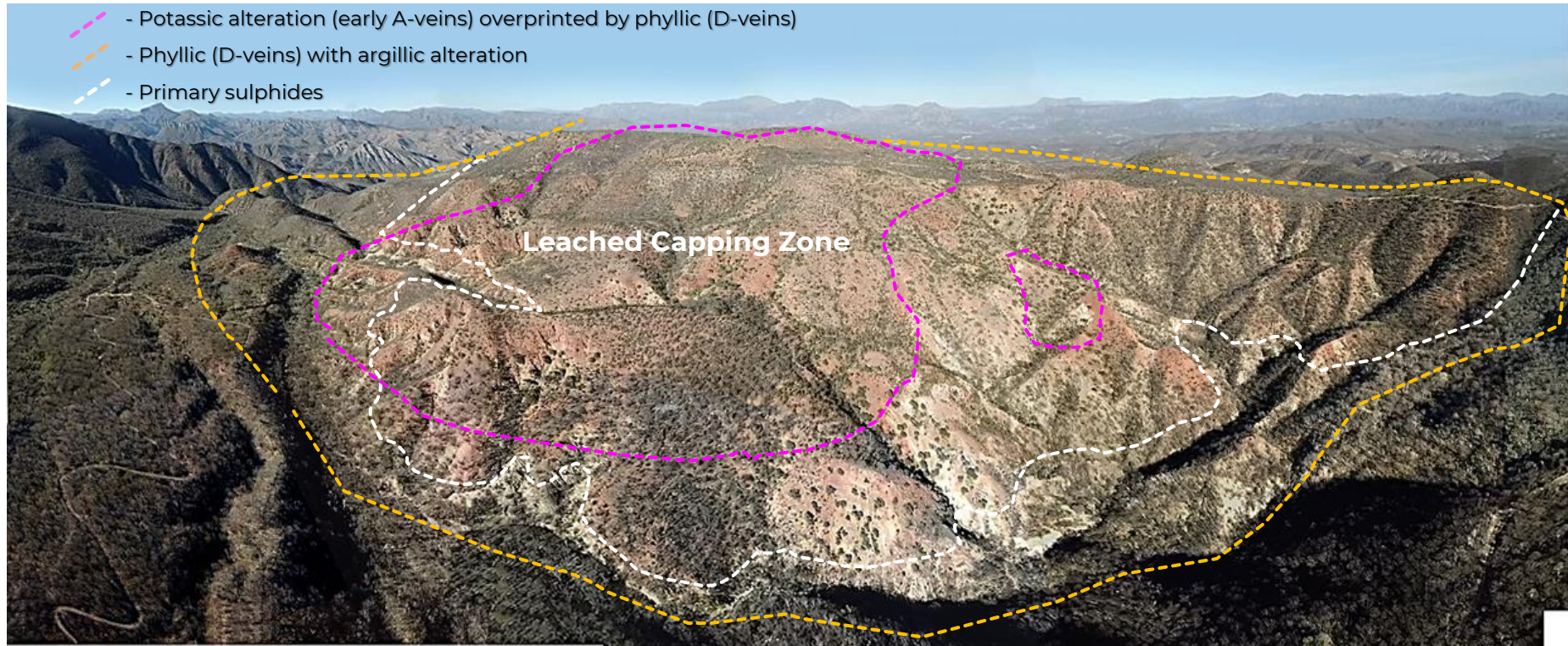
Legend

- Aster Argillic Anomaly
- Aster Phyllic Anomaly
- IP Lines 2018
- 1068 Property
- Potassic overprinted by phyllic (Early qtz-mo-cpy veins, D veins)
- Phyllic-Argillic (D veins)
- MT Stations, 2022
- Roads

- Targeted using GlobeTrotter ASTER database
 - **Found Elida Copper Project, drilled by Lundin Mining and advanced by E29 Resources**
 - 404.5m of 0.45% Cu & 0.60% Cu Eq from 45.5m
 - 332 million inferred tonnes, 0.32% Cu, model 0.71:1 strip
- Strong ASTER alteration signature associate with mapped strong phyllic+argillic porphyry footprint

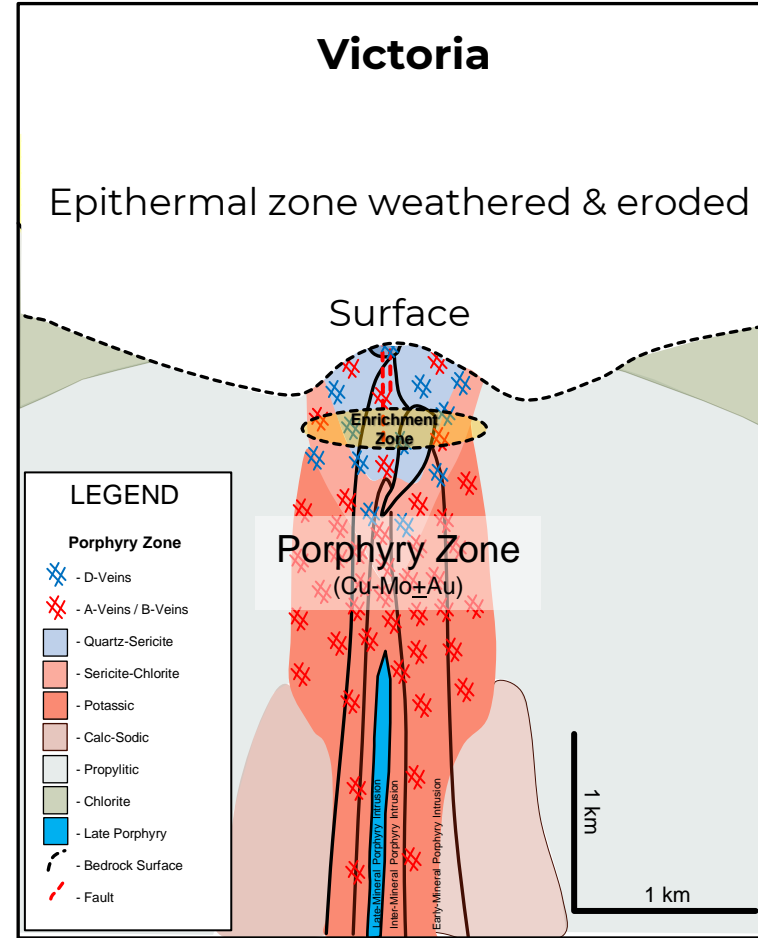
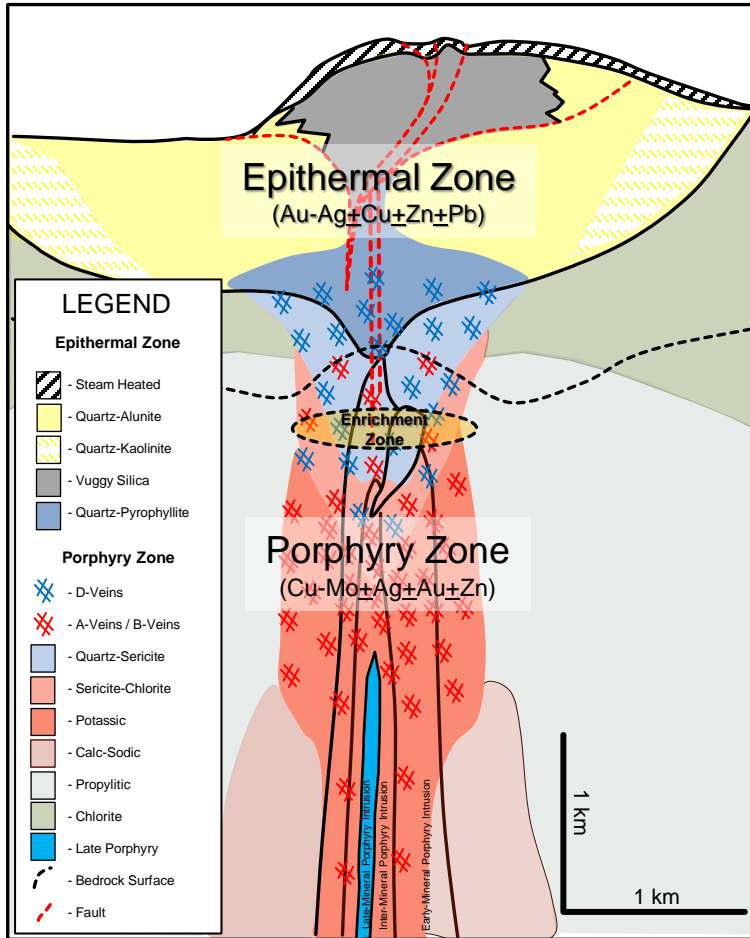
Victoria - Panoramic View

- Intense leached capping associated with strong phyllic alteration overprinting potassic alteration resulting in low surface copper grades
- Locally potassic alteration is exposed on the west margin of the porphyry system with primary \pm secondary Cu+Mo \pm Au mineralization grading up to 0.76% Cu and 0.021% Mo



Porphyry Cu-Mo±Au System Model

(Sectional View & Victoria Conceptual View)



Porphyry Related Alteration



Dense D-veins with limonites



Quartz-limonite veinlets (A-veins)



Crackle breccia with limonites



- Strong phyllic alteration associated with extensive jarositic+goethitic leached capping in felsic volcanoclastic rocks
- Phyllic overprinting potassic alteration

Epithermal Veins



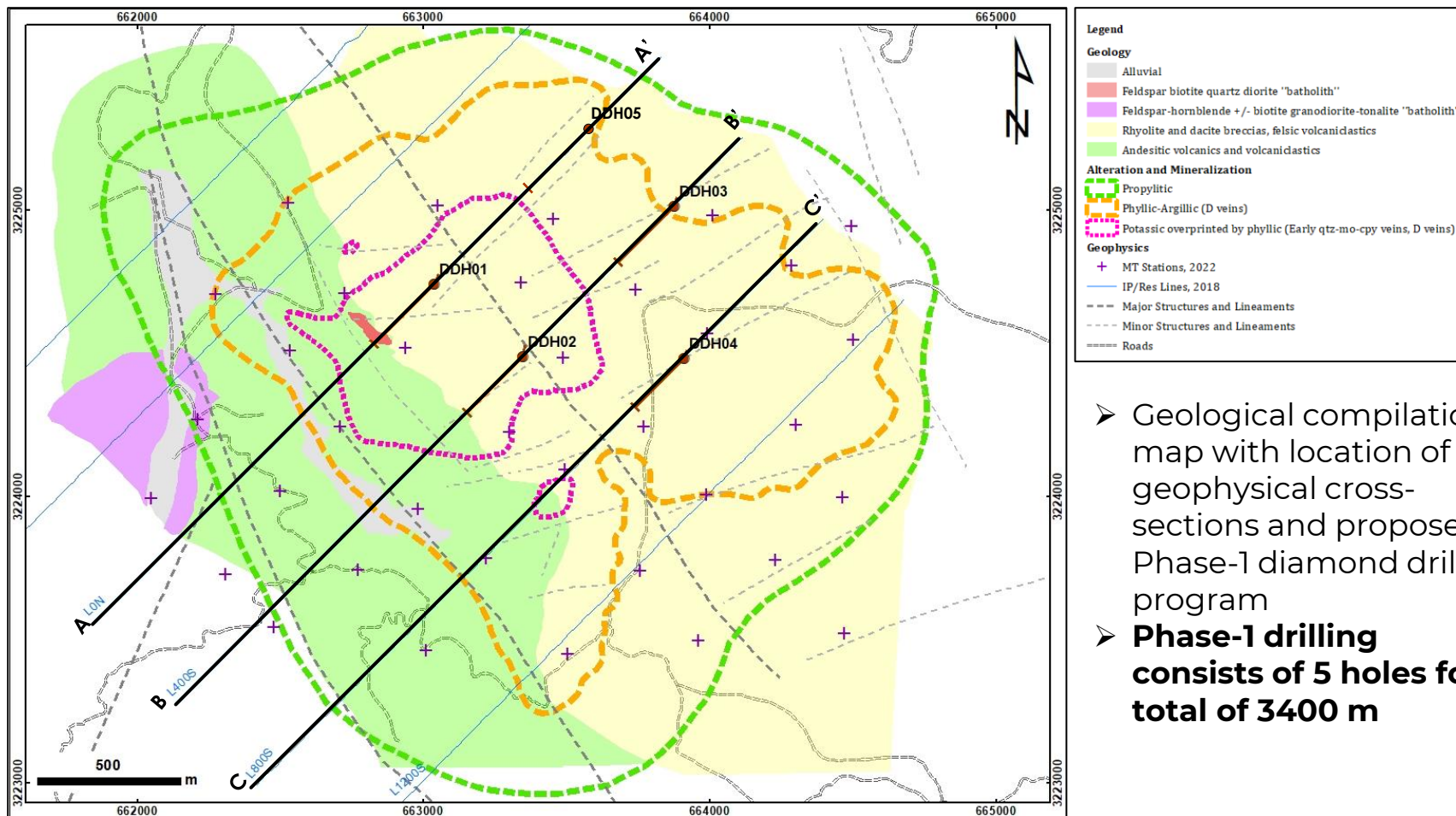
Quartz-pyrite (intermediate sulphidation) veins cross-cutting and injected-along chlorite-magnetite veins in propylitic altered andesite



Sample of quartz-pyrite (intermediate sulphidation) vein with Cu-oxides grading up to 1.33 % Cu, 0.851 g/t Au and 9.86 g/t Ag

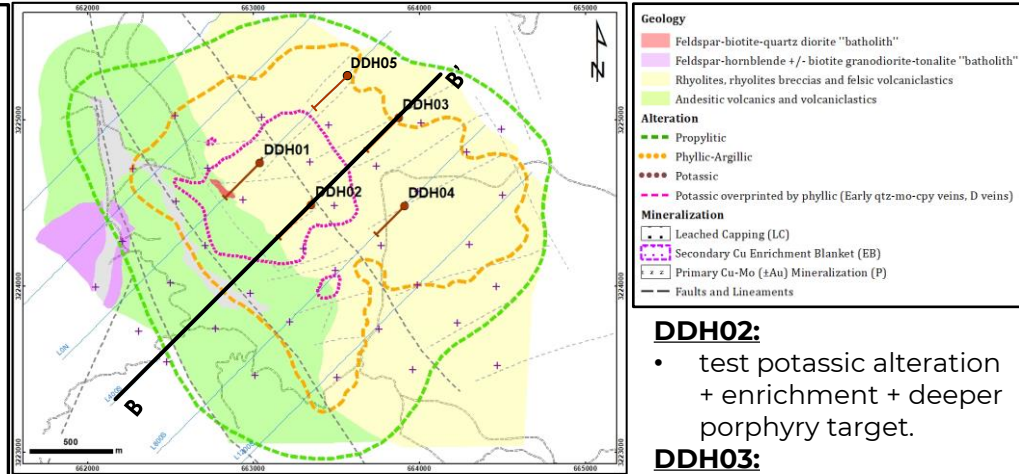
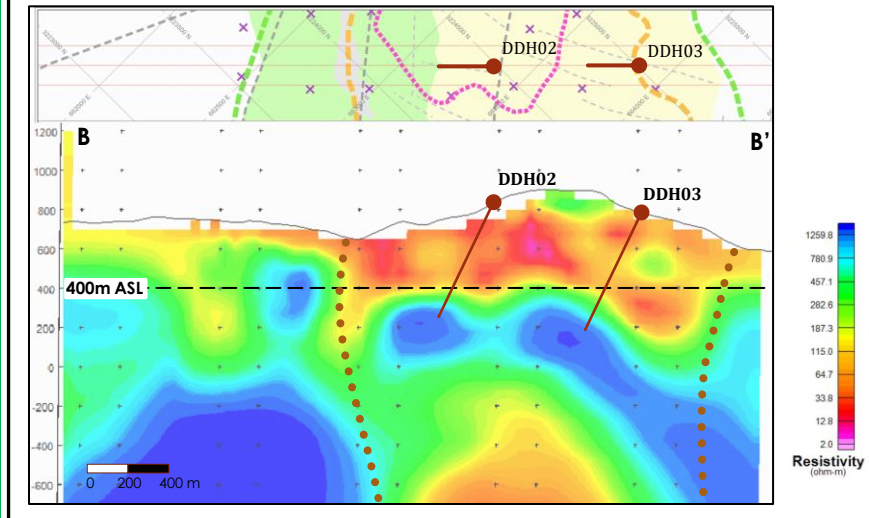
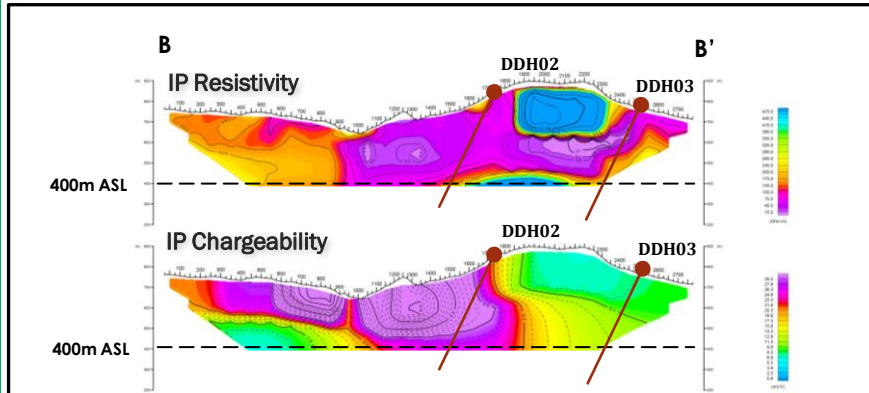


Geological Compilation



- Geological compilation map with location of geophysical cross-sections and proposed Phase-1 diamond drill program
- **Phase-1 drilling consists of 5 holes for a total of 3400 m**

Sections B-B'

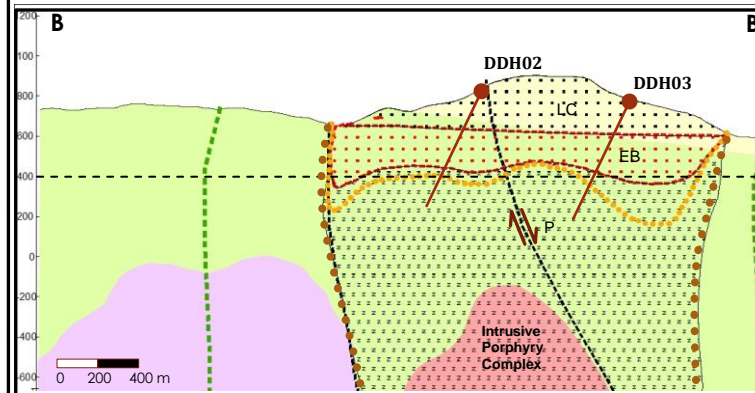


DDH02:

- test potassic alteration + enrichment + deeper porphyry target.

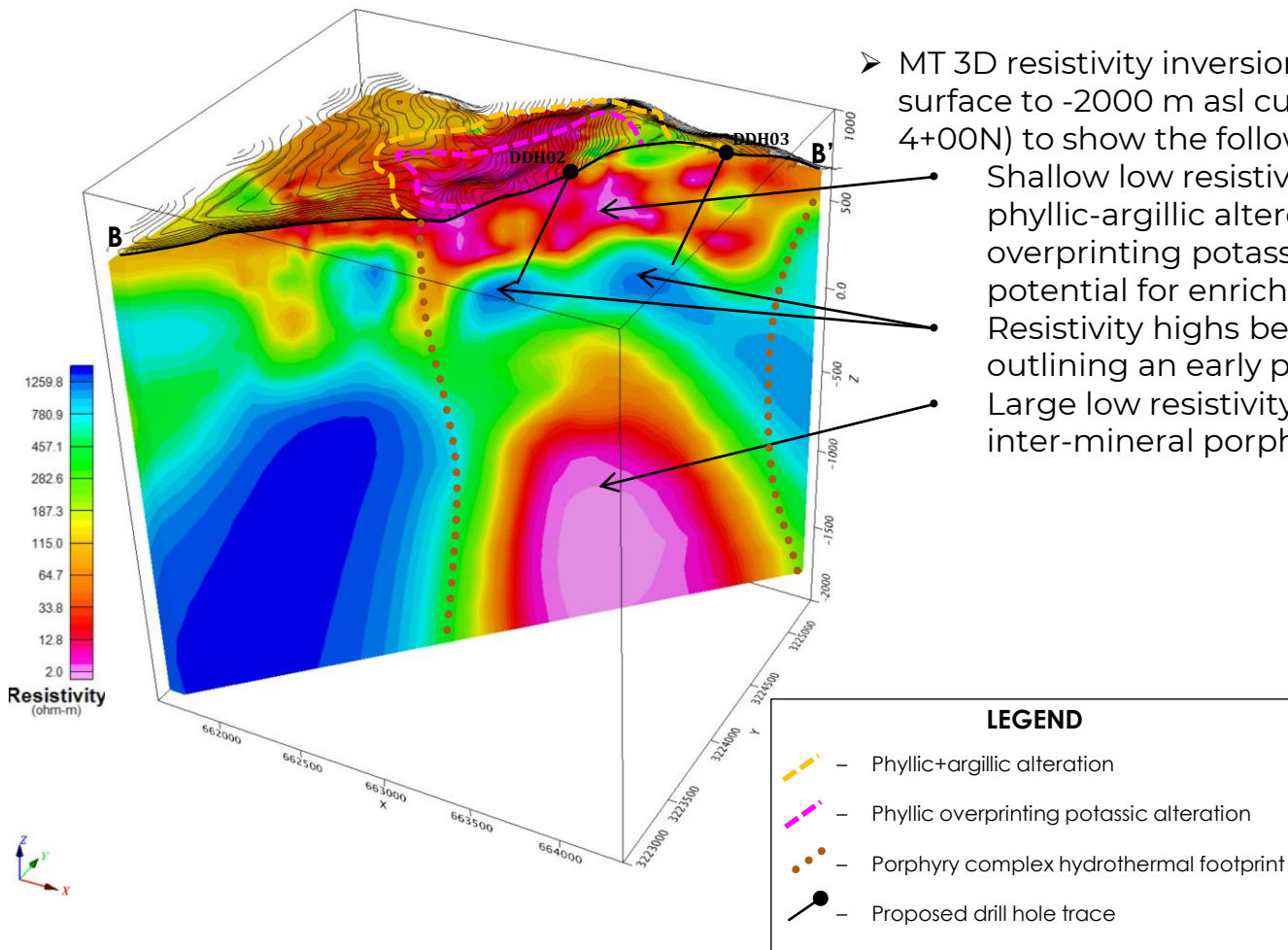
DDH03:

- test enrichment + deeper porphyry target.



MT 3D Resistivity Inversion Section B-B'

(Looking NW)

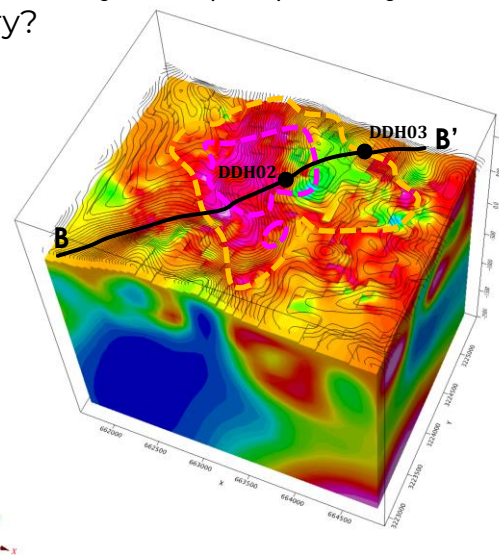


➤ MT 3D resistivity inversion block model extending from surface to -2000 m asl cut along Section B-B' (IP Line - 4+00N) to show the following:

Shallow low resistivity anomaly associated with phyllic-argillic altered leached capping locally overprinting potassic alteration (A-veins) with potential for enrichment along the base?

Resistivity highs below the leached capping possibly outlining an early potassic altered porphyry target?

Large low resistivity anomaly at depth possibly a late inter-mineral porphyry?





CONTACT US

Rory Quinn +1.604.366.4408

Richard Osmond +1.604.805.0314

Christian Grijalva +52.662.948.7336